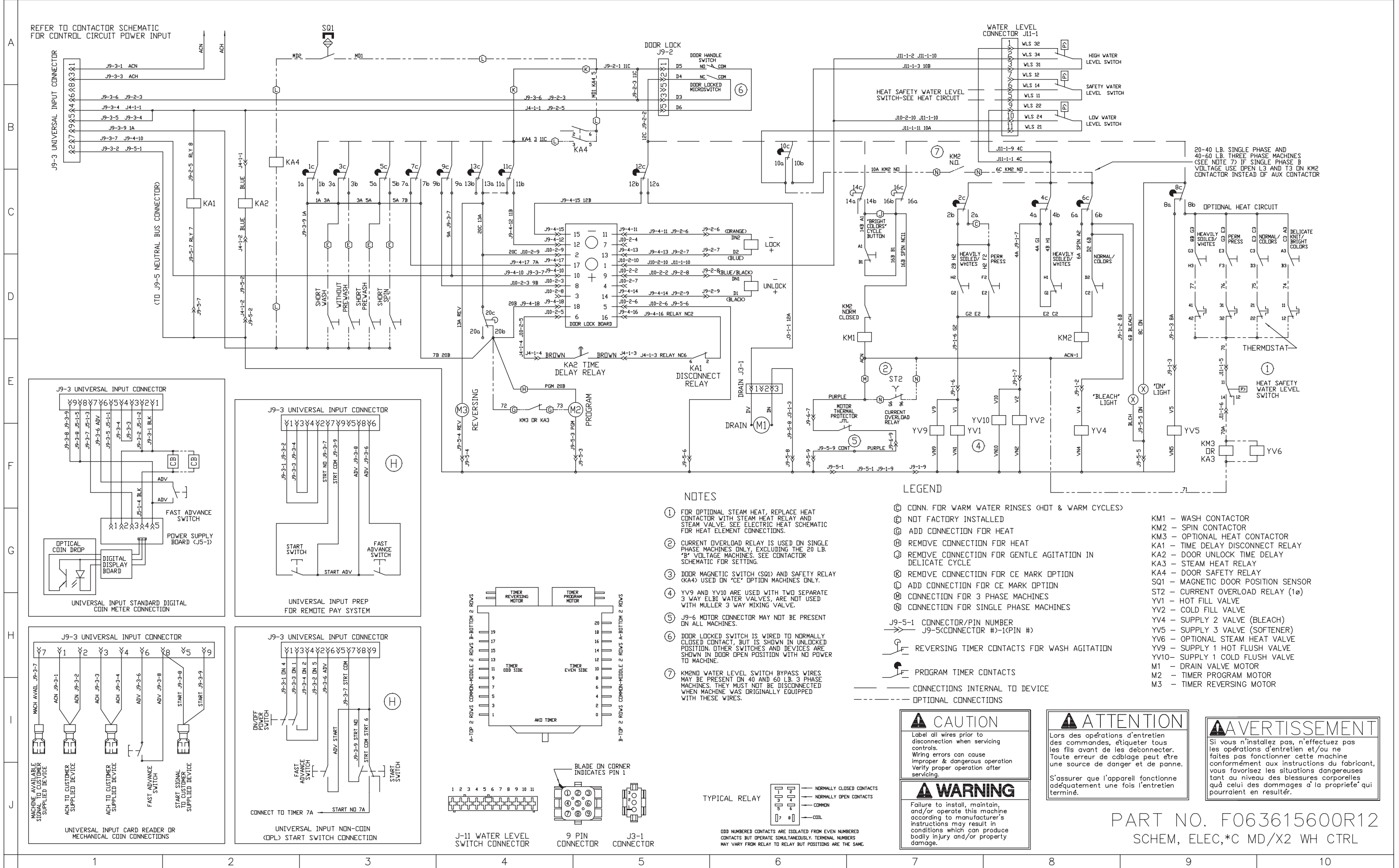
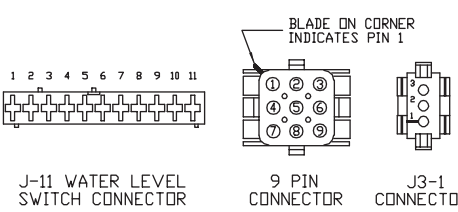
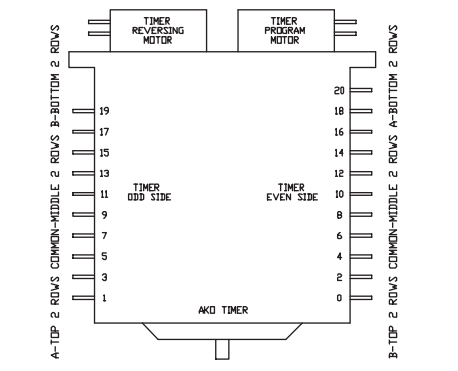
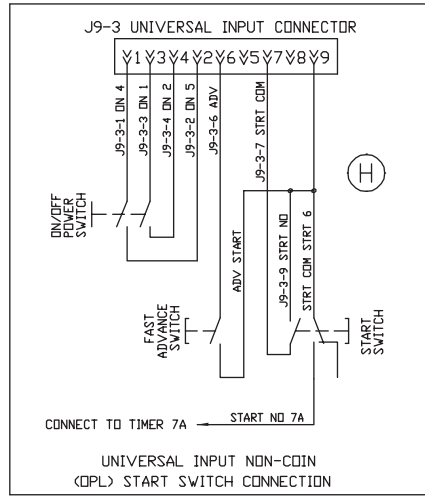
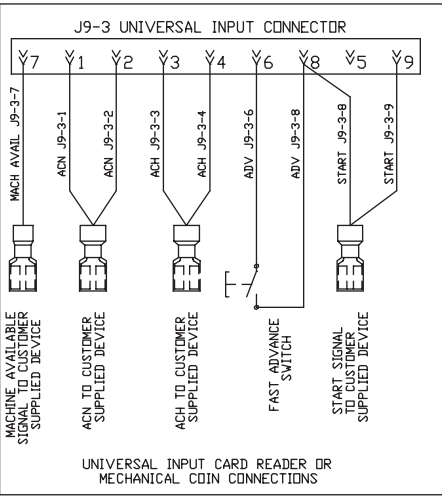
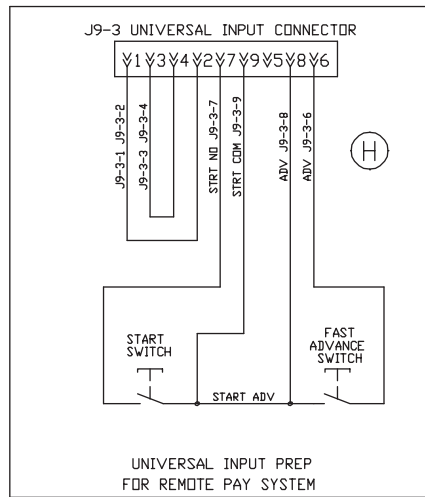
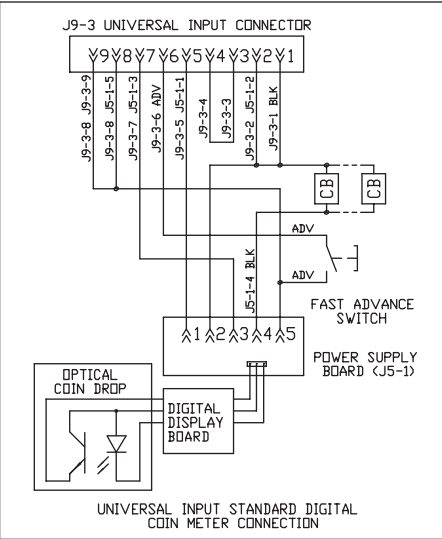


REFER TO CONTACTOR SCHEMATIC FOR CONTROL CIRCUIT POWER INPUT



A
B
C
D
E
F
G
H
I
J



NOTES

- FOR OPTIONAL STEAM HEAT, REPLACE HEAT CONTACTOR WITH STEAM HEAT RELAY AND STEAM VALVE. SEE ELECTRIC HEAT SCHEMATIC FOR HEAT ELEMENT CONNECTIONS.
- CURRENT OVERLOAD RELAY IS USED ON SINGLE PHASE MACHINES ONLY, EXCLUDING THE 20 LB. "B" VOLTAGE MACHINES. SEE CONTACTOR SCHEMATIC FOR SETTING.
- DOOR MAGNETIC SWITCH (SQ1) AND SAFETY RELAY (KA4) USED ON "CE" OPTION MACHINES ONLY.
- YV9 AND YV10 ARE USED WITH TWO SEPARATE 3 WAY ELBI WATER VALVES, ARE NOT USED WITH MULLER 3 WAY MIXING VALVE.
- J9-6 MOTOR CONNECTOR MAY NOT BE PRESENT ON ALL MACHINES.
- DOOR LOCKED SWITCH IS WIRED TO NORMALLY CLOSED CONTACT, BUT IS SHOWN IN UNLOCKED POSITION. OTHER SWITCHES AND DEVICES ARE SHOWN IN DOOR OPEN POSITION WITH NO POWER TO MACHINE.
- KM2ND WATER LEVEL SWITCH BYPASS WIRES MAY BE PRESENT ON 40 AND 60 LB. 3 PHASE MACHINES. THEY MUST NOT BE DISCONNECTED WHEN MACHINE WAS ORIGINALLY EQUIPPED WITH THESE WIRES.

LEGEND

- CONN. FOR WARM WATER RINSES (HOT & WARM CYCLES)
 - NOT FACTORY INSTALLED
 - ADD CONNECTION FOR HEAT
 - REMOVE CONNECTION FOR HEAT
 - REMOVE CONNECTION FOR GENTLE AGITATION IN DELICATE CYCLE
 - REMOVE CONNECTION FOR CE MARK OPTION
 - ADD CONNECTION FOR CE MARK OPTION
 - CONNECTION FOR 3 PHASE MACHINES
 - CONNECTION FOR SINGLE PHASE MACHINES
 - J9-5-1 CONNECTOR/PIN NUMBER
 - J9-5<CONNECTOR #>-1<PIN #>
 - REVERSING TIMER CONTACTS FOR WASH AGITATION
 - PROGRAM TIMER CONTACTS
 - CONNECTIONS INTERNAL TO DEVICE
 - OPTIONAL CONNECTIONS
- KM1 - WASH CONTACTOR
 KM2 - SPIN CONTACTOR
 KM3 - OPTIONAL HEAT CONTACTOR
 KA1 - TIME DELAY DISCONNECT RELAY
 KA2 - DOOR UNLOCK TIME DELAY
 KA3 - STEAM HEAT RELAY
 KA4 - DOOR SAFETY RELAY
 SQ1 - MAGNETIC DOOR POSITION SENSOR
 ST2 - CURRENT OVERLOAD RELAY (1Ø)
 YV1 - HOT FILL VALVE
 YV2 - COLD FILL VALVE
 YV4 - SUPPLY 2 VALVE (BLEACH)
 YV5 - SUPPLY 3 VALVE (SOFTENER)
 YV6 - OPTIONAL STEAM HEAT VALVE
 YV9 - SUPPLY 1 HOT FLUSH VALVE
 YV10 - SUPPLY 1 COLD FLUSH VALVE
 M1 - DRAIN VALVE MOTOR
 M2 - TIMER PROGRAM MOTOR
 M3 - TIMER REVERSING MOTOR

CAUTION

Label all wires prior to disconnection when servicing controls. Wiring errors can cause improper & dangerous operation. Verify proper operation after servicing.

WARNING

Failure to install, maintain, and/or operate this machine according to manufacturer's instructions may result in conditions which can produce bodily injury and/or property damage.

ATTENTION

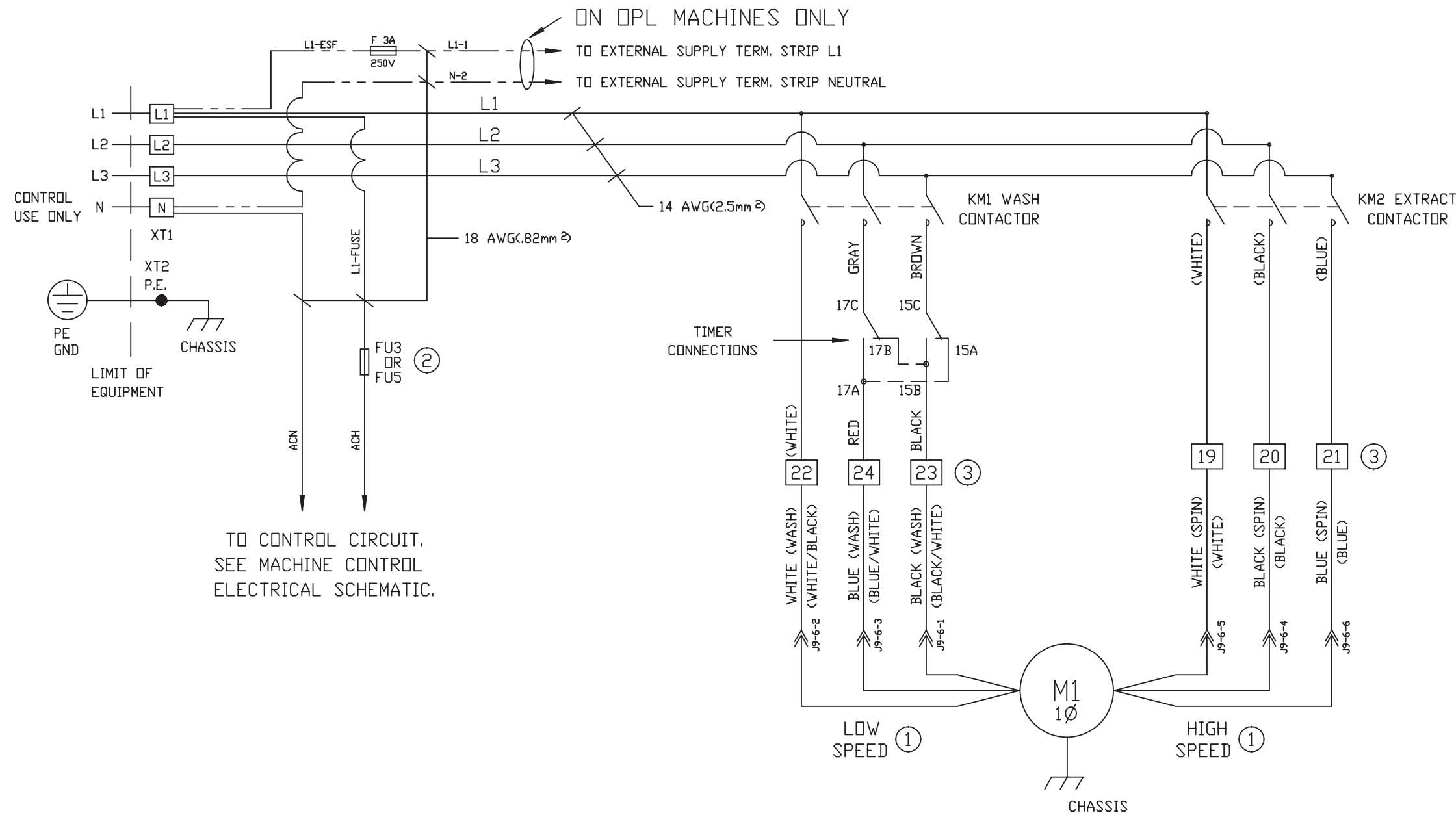
Lors des opérations d'entretien des commandes, étiqueter tous les fils avant de les déconnecter. Toute erreur de câblage peut être une source de danger et de panne. S'assurer que l'appareil fonctionne adéquatement une fois l'entretien terminé.

AVERTISSEMENT

Si vous n'installez pas, n'effectuez pas les opérations d'entretien et/ou ne faites pas fonctionner cette machine conformément aux instructions du fabricant, vous favorisez les situations dangereuses tant au niveau des blessures corporelles qu'à celui des dommages à la propriété qui pourraient en résulter.

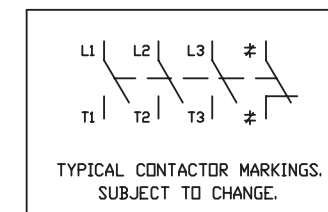
PART NO. F063615600R12
 SCHEM, ELEC,*C MD/X2 WH CTRL

C: 380-415V/50HZ/3ø/4W 220V CONTROLS



CONFIGURATION FOR
ELMO MOTORS ONLY
ALL MOTOR CIRCUIT
WIRING IS 14 AWG

CONTACTORS FACE
FRONT OR RIGHT
SIDE OF MACHINE
CONTACTOR DETAIL



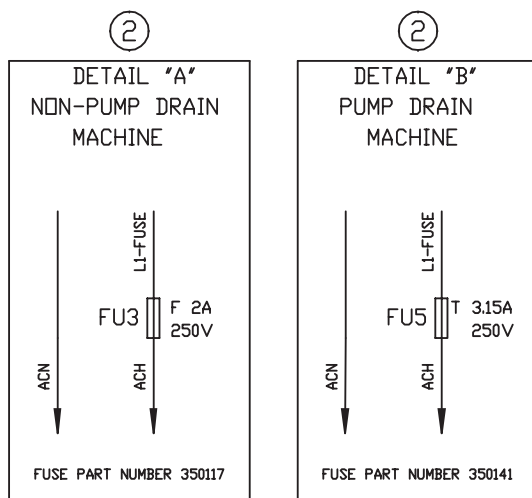
J9-6 MOTOR
CONNECTOR



LEGEND

- 24 - TERMINAL STRIP CONNECTION
- OPTIONAL CONNECTIONS
- KM1 RATED 15A INDUCTIVE AC3 (C16 OR EQUIV)
- KM2 RATED 15A INDUCTIVE AC3 (C16 OR EQUIV)

TO CONTROL CIRCUIT,
SEE MACHINE CONTROL
ELECTRICAL SCHEMATIC.



NOTES:

- 1 IF MOTOR ROTATION IS INCORRECT IN ANY ONE SPEED, REVERSE ANY TWO WIRES FOR THAT SPEED AT THE CONTACTOR. IF ALL SPEED ARE INCORRECT, REVERSE TWO WIRES AT THE POWER INPUT TERMINAL BLOCK.
- 2 USE 350117 F2A (FAST BLOW) FUSE FOR NON PUMP DRAIN MACHINES. USE 350141 T3.15A (SLOW BLOW) FUSE FOR PUMP DRAIN MACHINES. SEE DETAIL BOXES A AND B FOR DETAILS.
- 3 TERMINAL STRIPS MAY NOT BE PRESENT ON ALL MACHINES. MAKE CONNECTIONS DIRECTLY TO CONTACTOR OR OR JUMPER WIRE AS NECESSARY. J9-6 MOTOR CONNECTOR MAY NOT BE PRESENT ON ALL MACHINES. MOTOR WIRES MAY BE GRAY WITH COLORS PRINTED, OR MAY BE COLORED WIRES WITH OR WITHOUT STRIPES.

WARNING
Failure to install, maintain, and/or operate this machine according to manufacturer's instructions may result in conditions which can produce bodily injury and/or property damage.

ATTENTION
Lors des opérations d'entretien des commandes, étiqueter tous les fils avant de les déconnecter. Toute erreur de câblage peut être une source de danger et de panne. adéquatement une fois l'entretien S'assurer que l'appareil fonctionne termine.

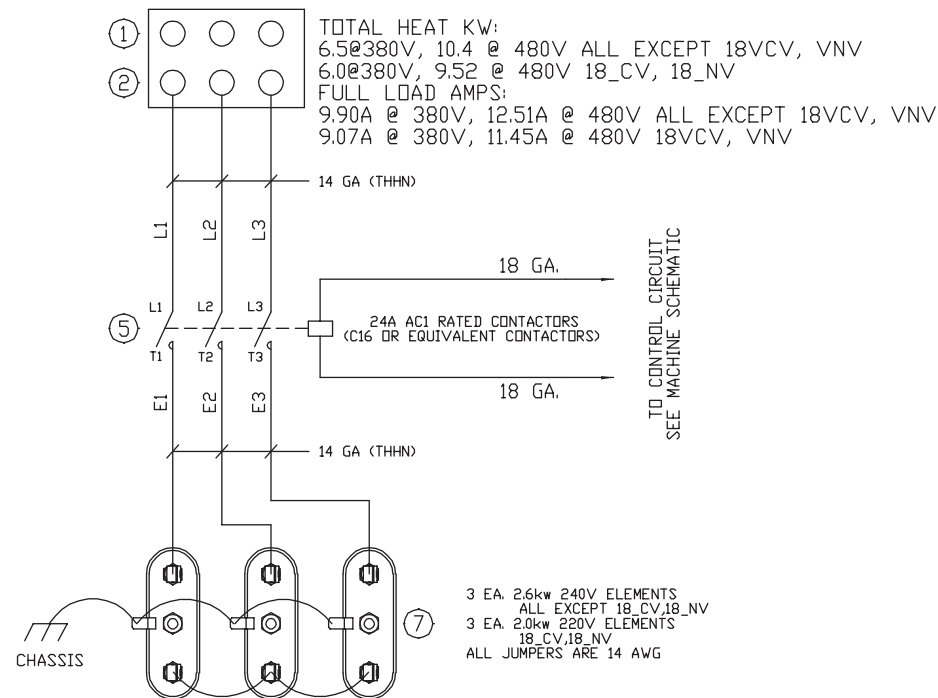
CAUTION
Label all wires prior to disconnection when servicing controls. Wiring errors can cause improper & dangerous operation. Verify proper operation after servicing.

AVERTISSEMENT
Si vous n'installez pas, n'effectuez pas les opérations d'entretien et/ou ne faites pas fonctionner cette machine conformément aux instructions du fabricant, vous favorisez les situations dangereuses tant au niveau des blessures corporelles qu'à celui des dommages à la propriété qui pourraient en résulter.

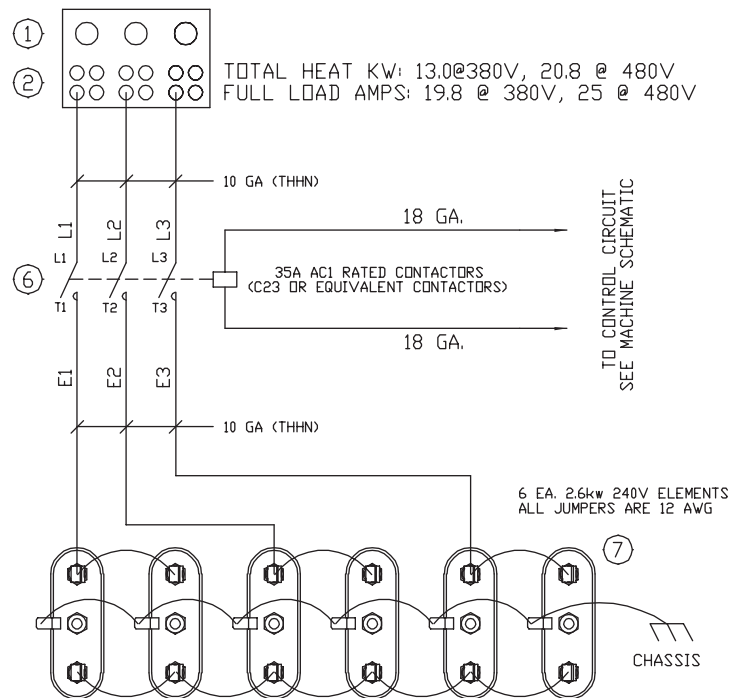
PART NO. F200117500R3
SCHEM, ELEC, CNTOR, *C20-60M_2C

C: 380-415V/50HZ/3ø/4W - 220V CNTRL
 F: 440-480V/60HZ/3ø/3W - 120V CNTRL
 H: 380V/60HZ/3ø/3W - 120V CNTRL
 N: 440-480V/50-60HZ/3ø/3W - 120V CNTRL
 P: 380-415V/50-60HZ/3ø/3W - 120V CNTRL

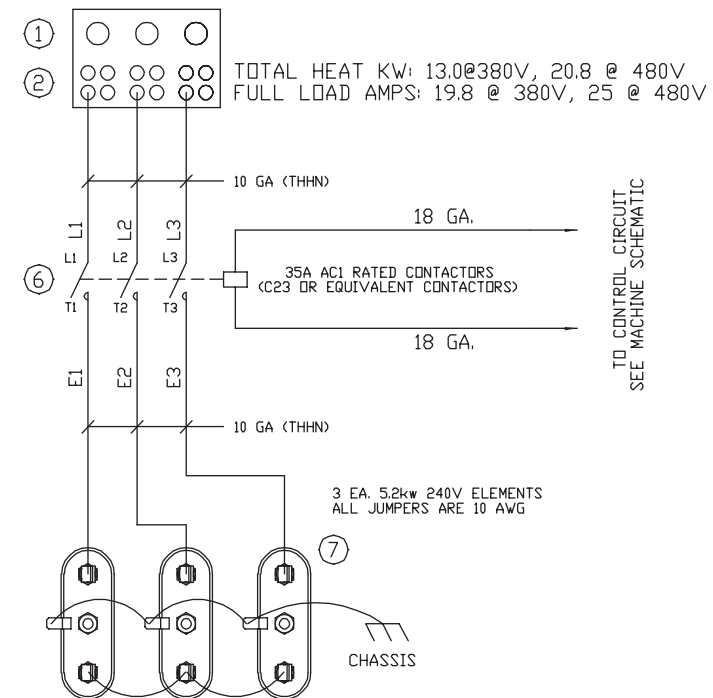
***C 18-30 ONLY**
 L1 L2 L3



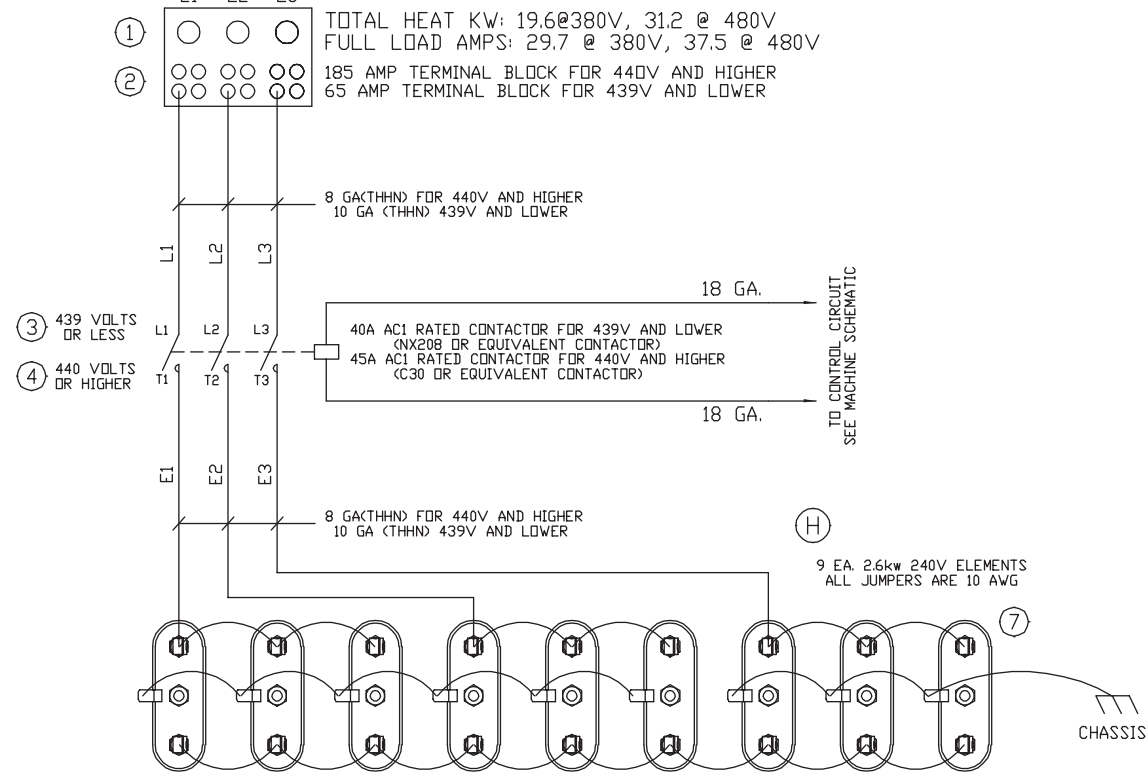
***C 35 ONLY**
 L1 L2 L3



***C 40 ONLY**
 L1 L2 L3



***C 50 ONLY**
 L1 L2 L3



NOTES

- ① P/N 0140747-00 65AMP TERMINAL BLOCK
- ② USED ON *C50 WHEN VOLTAGE IS 440V OR HIGHER
 P/N 0140770-00 185AMP TERMINAL BLOCK-3 TERMINALS
 P/N 0140755-00 185AMP TERMINAL BLOCK-4 TERMINALS
 P/N 0140798-00 FOR ALL *C18-50B_2 MACHINES
- ③ P/N 0330187-00 FOR 120V CONTROLS
 P/N 0330188-00 FOR 220V CONTROLS
 P/N 0330190-00 FOR 24V CONTROLS
- ④ P/N 0330180-00 FOR 120V CONTROLS
 P/N 0330182-00 FOR 220V CONTROLS
 P/N 0330181-00 FOR 24V CONTROLS
- ⑤ P/N 0330175-00 FOR 120V CONTROLS
 P/N 0330177-00 FOR 220V CONTROLS
 P/N 0330176-00 FOR 24V CONTROLS
- ⑥ P/N 0330178-00 FOR 120V CONTROLS
 P/N 0330179-00 FOR 220V CONTROLS
 P/N 0330189-00 FOR 24V CONTROLS
- ⑦ P/N 0360206-00 FOR 18VCV, VNV MACHINES.
 P/N 0360210-00 FOR *C40 MACHINES.
 P/N 0360205-00 FOR ALL OTHERS.

CAUTION

Label all wires prior to disconnection when servicing controls.
 Wiring errors can cause improper & dangerous operation.
 Verify proper operation after servicing.

WARNING

Failure to install, maintain, and/or operate this machine according to manufacturer's instructions may result in conditions which can produce bodily injury and/or property damage.

ATTENTION

Lors des opérations d'entretien des commandes, étiqueter tous les fils avant de les déconnecter. Toute erreur de câblage peut être une source de danger et de panne.
 S'assurer que l'appareil fonctionne adéquatement une fois l'entretien terminé.

AVERTISSEMENT

Si vous n'installez pas, n'effectuez pas les opérations d'entretien et/ou ne faites pas fonctionner cette machine conformément aux instructions du fabricant, vous favorisez les situations dangereuses tant au niveau des blessures corporelles qu'à celui des dommages à la propriété qui pourraient en résulter.

PART NO. F063433400R9

SCHEM, ELEC,*C20-60CFHNP EL HT