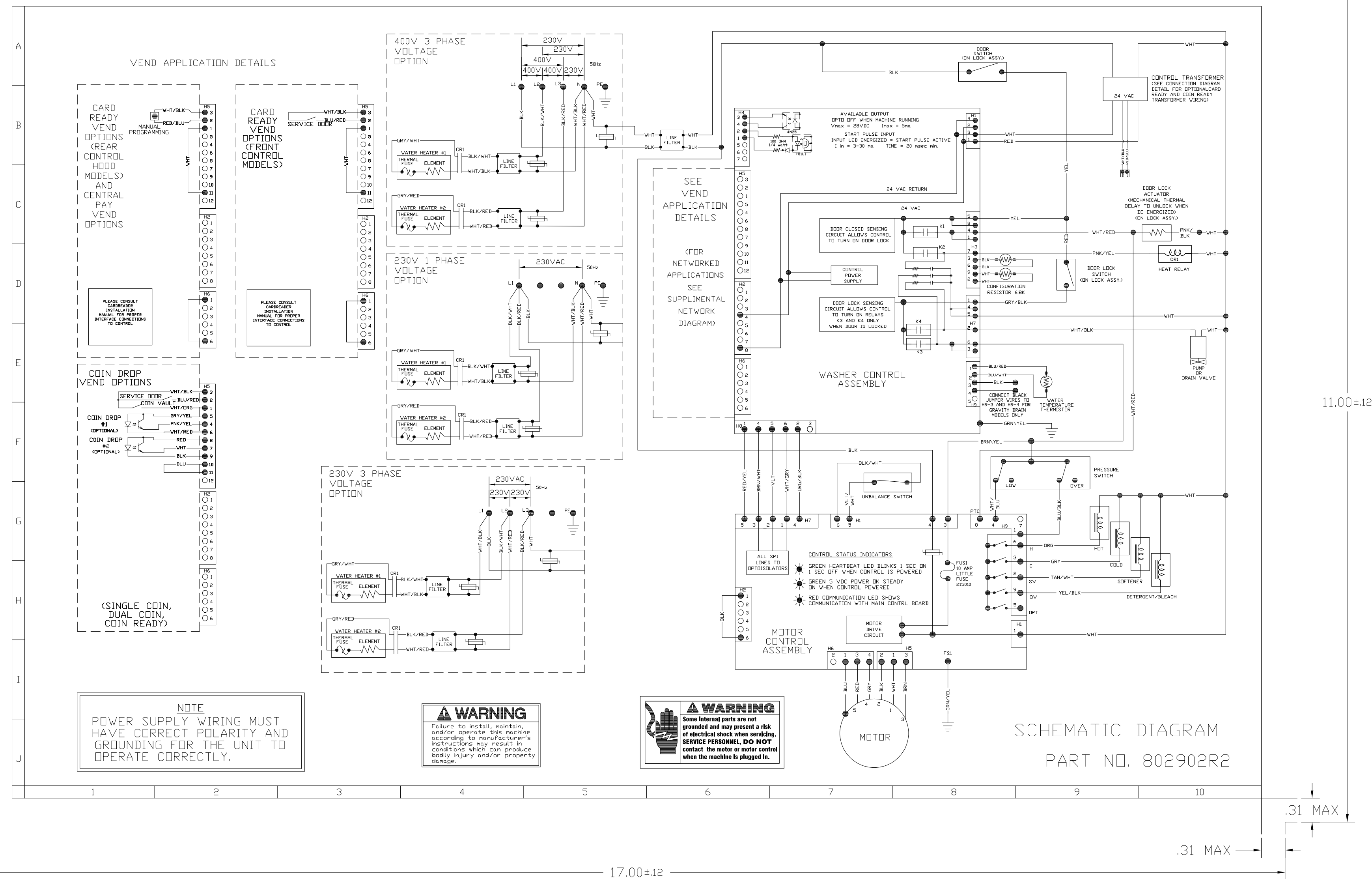


PART NO	REV	DESCRIPTION
802902R2	2	DIAGRAM,SCHEMATIC



**NOTE**  
POWER SUPPLY WIRING MUST HAVE CORRECT POLARITY AND GROUNDING FOR THE UNIT TO OPERATE CORRECTLY.

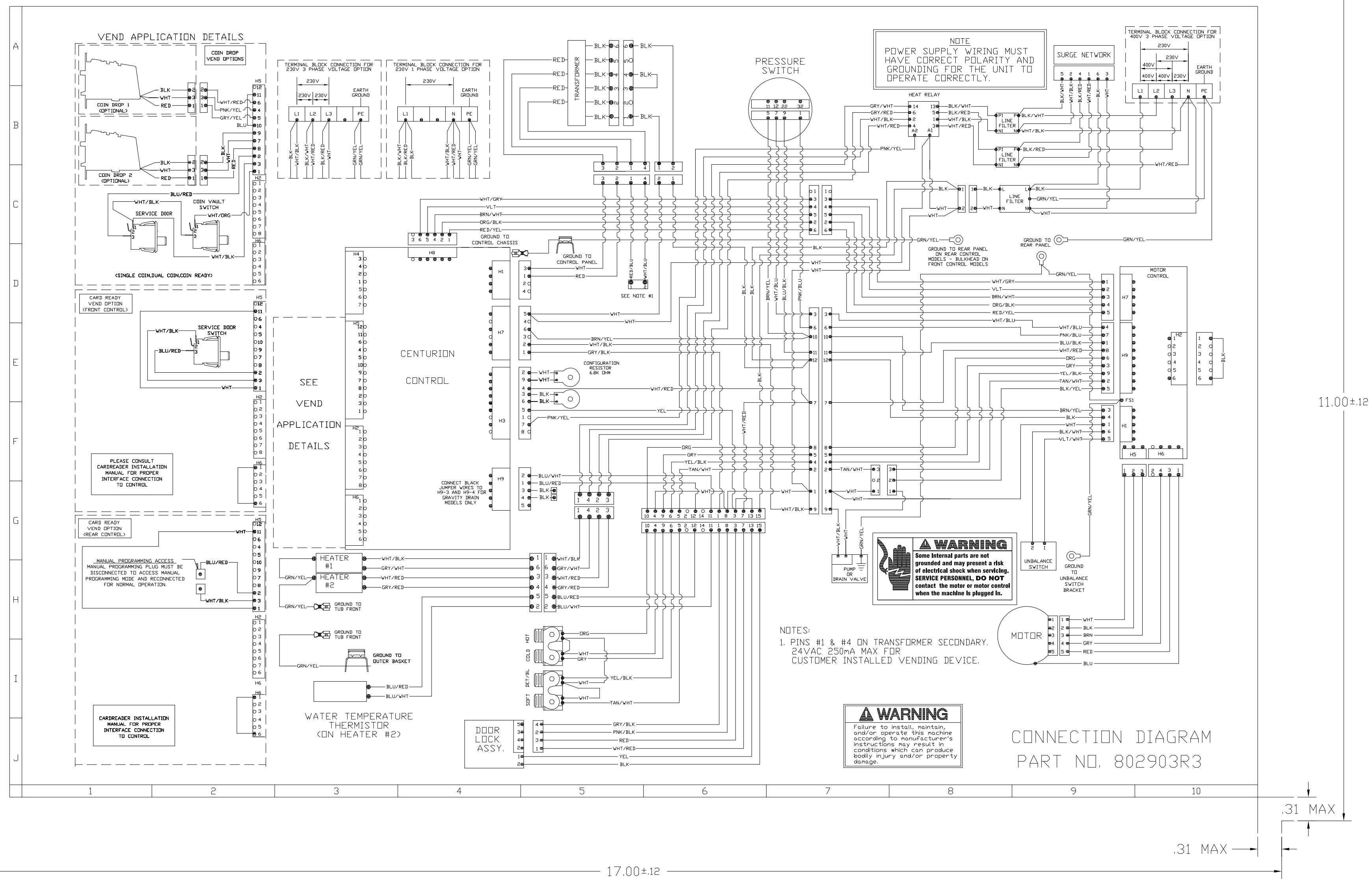
**WARNING**  
Failure to install, maintain, and/or operate this machine according to manufacturer's instructions may result in conditions which can produce body injury and/or property damage.

**WARNING**  
Some internal parts are not provided and may present a risk of electrical shock when servicing. SERVICE PROFESSIONALS. DO NOT contact the motor or motor control when the machine is plugged in.

SCHEMATIC DIAGRAM  
PART NO. 802902R2

- NOTES:
1. DRAWING IS ARTWORK.
  2. FOLD SIZE: 4.25 X 5.50 WITH PRINT FACING OUT.
  3. MODELS:  
-CENTURION CONTROL  
-400/230V, 3 PHASE  
-HEAT

2	REROUTED HEATER WIRE TO A 4 N.D. CONTACTOR CR1.	JJS	04-03-12	JJS	PDR	SAJ	15093	8-1-12
1	ADDED CONTROL STATUS INDICATORS AND H2 6 PIN TO MOTOR CONTROL ASSEMBLY; ADDED NOTE 3; ADDED BLK JUMPER TO MOTOR CONTROL H2	RJM	07-22-09	DVN	BSC	SAJ	11451	8-3-09
-	RELEASED FOR PRODUCTION	JDA	8-11-08	DVN	DLU	SAJ	9881	8-19-08
NO.	SEE LATEST REVISION ABOVE	REVISION BY	AND DATE	ENG	MFG	QUA	NOTICE	DATE
FINISH		PRINTING-BLACK, BACKGROUND-WHITE		MATERIAL		20# WHITE OFFSET BOND PAPER		
CONFIDENTIAL AND PROPRIETARY INFORMATION		UNLESS OTHERWISE SPECIFIED DIMENSIONS ARE IN INCHES		TOLERANCES:		1 PLACE DECIMALS: ± NA		
Not to be used or reproduced without the permission of Alliance Laundry Systems LLC		2 PLACE DECIMALS: ± NA		3 PLACE DECIMALS: ± NA		ANGLES NA DEG NA MIN		
THIRD ANGLE PROJECTION		APPROXIMATE FINISH AREA		DO NOT SCALE DRAWING		CONTROL CHAR		
PRIME SQ. FT. NA		FINISH SQ. FT. NA		AutoCAD Mechanical Dwg		SCALE NTS		
NAME		DIAGRAM,SCHEMATIC		SIZE		D		
DRAWING NO.		802902R2		SHEET		1 OF 1		



- NOTES:
- DRAWING IS ARTWORK.
  - FOLD SIZE: 4.25 X 5.50 WITH PRINT FACING OUT.
  - BASE HARNESS: 802834  
MOTOR HARNESS: 802274  
CONTROL HARNESS: 802906  
CARDREADER READY HARNESS: 800374  
COIN DROP HARNESS: 802904  
DUAL COIN DROP HARNESS: 802905  
TRANSFORMER HARNESS: M413507  
CARDREADER READY HARNESS REAR CONTROL: 800680  
CONTACTOR HARNESS: 804229  
HEATER HARNESS: 802323  
POWER HARNESS: 801261  
DRIVE HARNESS: 802894
  - MODELS:  
-CENTURION CONTROL  
-400/230V, 3 PHASE  
-HEAT

3	REROUTED HEATER WIRE TO A 4 N.O. CONTACTOR CR1	JJS	JJS	PDR	SAJ	15093			
2	ADDED "SEE NOTE 1" TO DIAGRAM; ADDED H2, 6 PIN TO MOTOR CONTROL; RENUMBERED PIN LOCATIONS IN DOOR LOCK ASSY; ADDED DRIVE HARNESS TO NOTE 3; ADDED NOTE 4	RJM	06-19-09	DVN	DSC	SAJ	11451	8-3-09	
1	ADDED MISSING LINE ART; CORRECTED SCALE	JDA	10-3-08	DVN	DLJ	SAJ	10175	10-17-08	
-	RELEASED FOR PRODUCTION	JDA	8-11-08	DVN	DLJ	SAJ	9881	8-19-08	
NO.	SEE LATEST REVISION ABOVE	REVISION BY	AND DATE	ENG	MFG	QUA	NOTICE DATE		
FINISH PRINTING-BLACK, BACKGROUND-WHITE		MATERIAL 20# WHITE OFFSET BOND PAPER		CONFIDENTIAL AND PROPRIETARY INFORMATION		UNLESS OTHERWISE SPECIFIED DIMENSIONS ARE IN INCHES		NAME	
TOLERANCES: 1 PLACE DECIMALS: ± NA 2 PLACE DECIMALS: ± NA 3 PLACE DECIMALS: ± NA ANGLES NA DEG NA MIN		VOLUME: NA		WEIGHT: NA		DRAWING NO. 802903R3		SIZE D	
THIRD ANGLE PROJECTION		APPROXIMATE FINISH AREA PRIME SQ. FT. NA FINISH SQ. FT. NA		DO NOT SCALE DRAWING		CONTROL CHAR 0		SCALE NTS	
SHEET 1 OF 1		AutoCAD Mechanical Dwg		SHEET 1 OF 1		T 1			