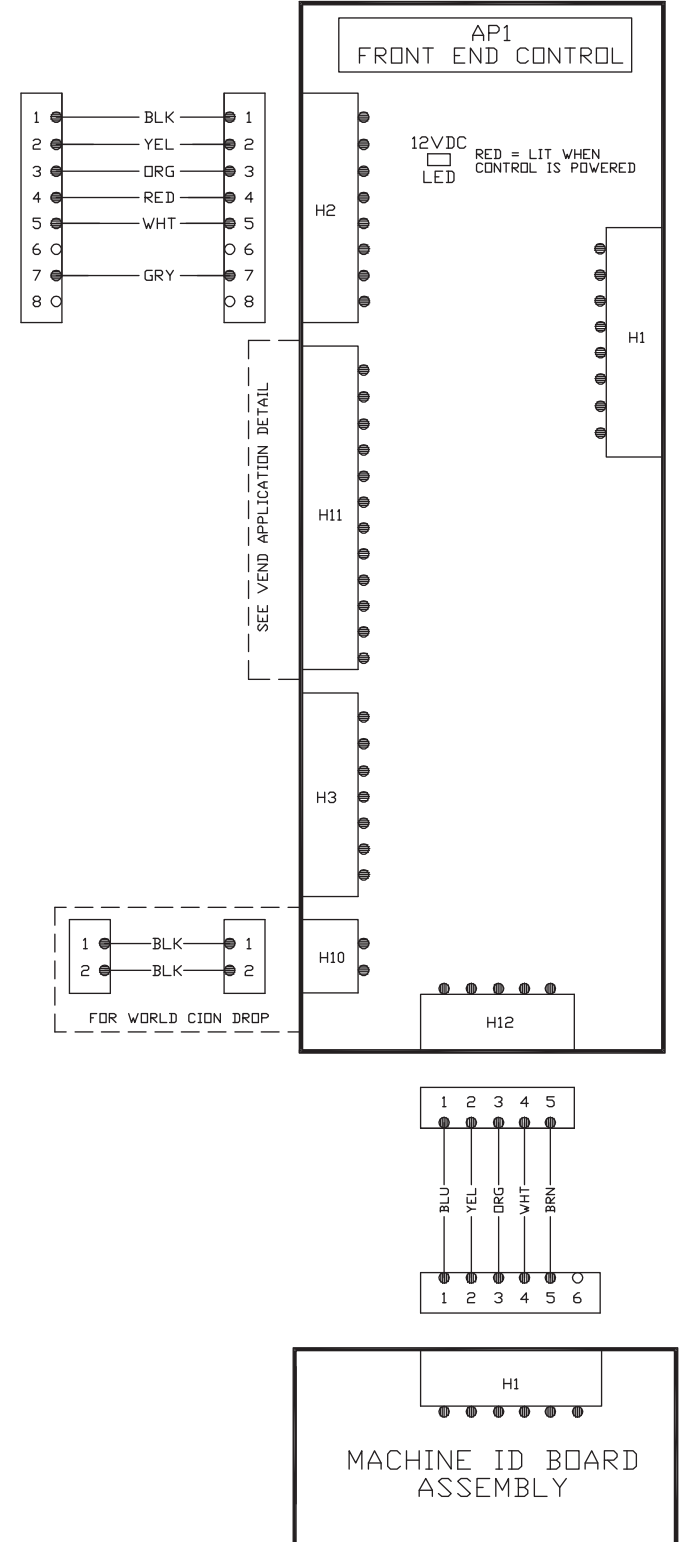
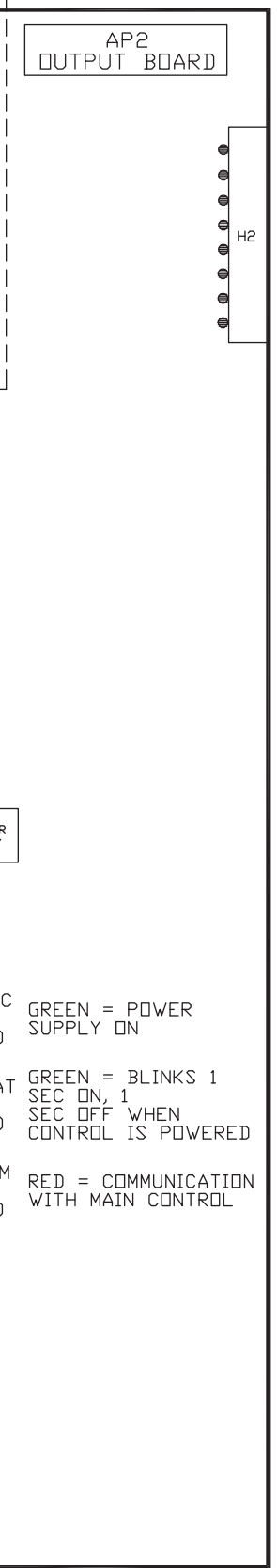
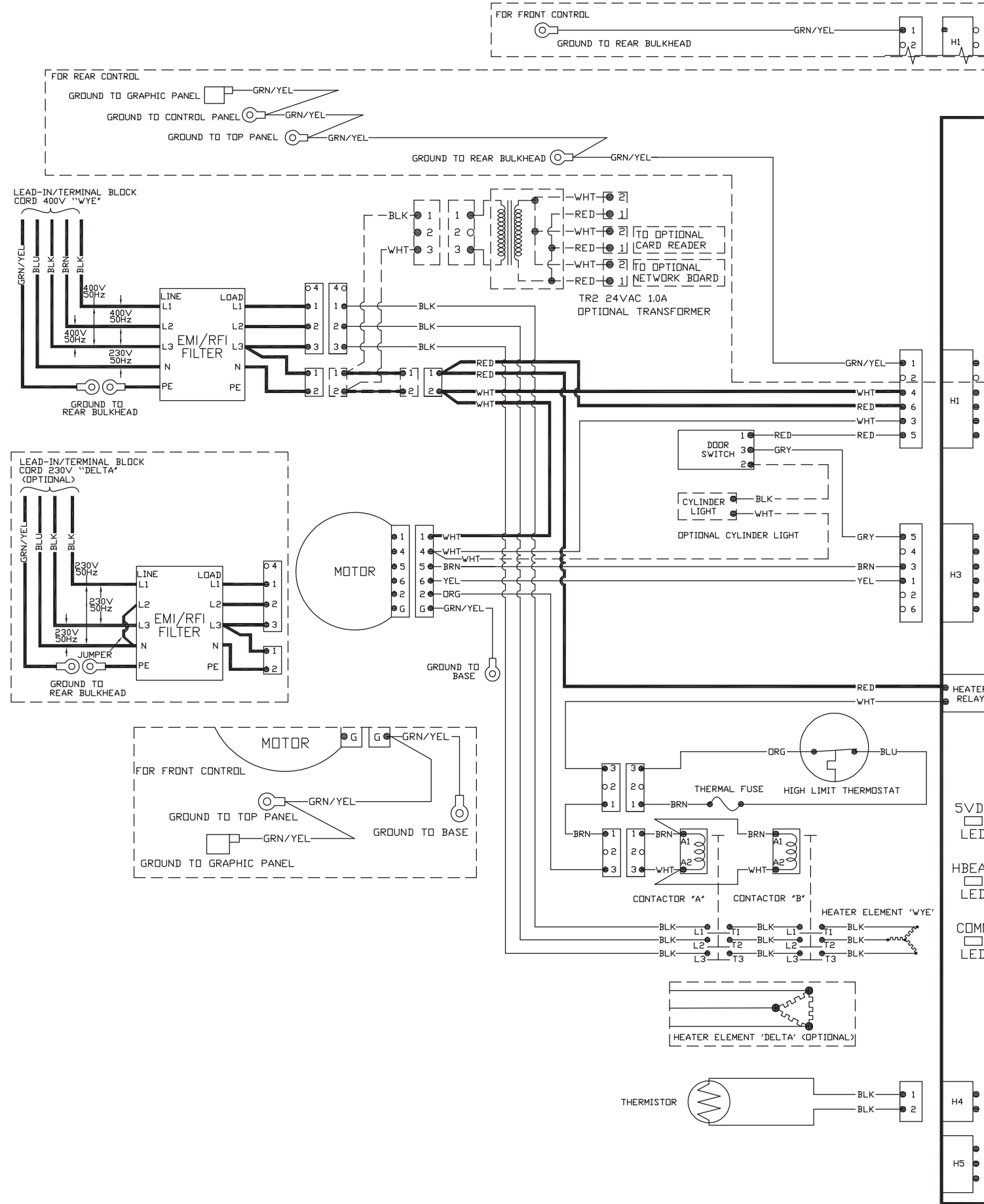
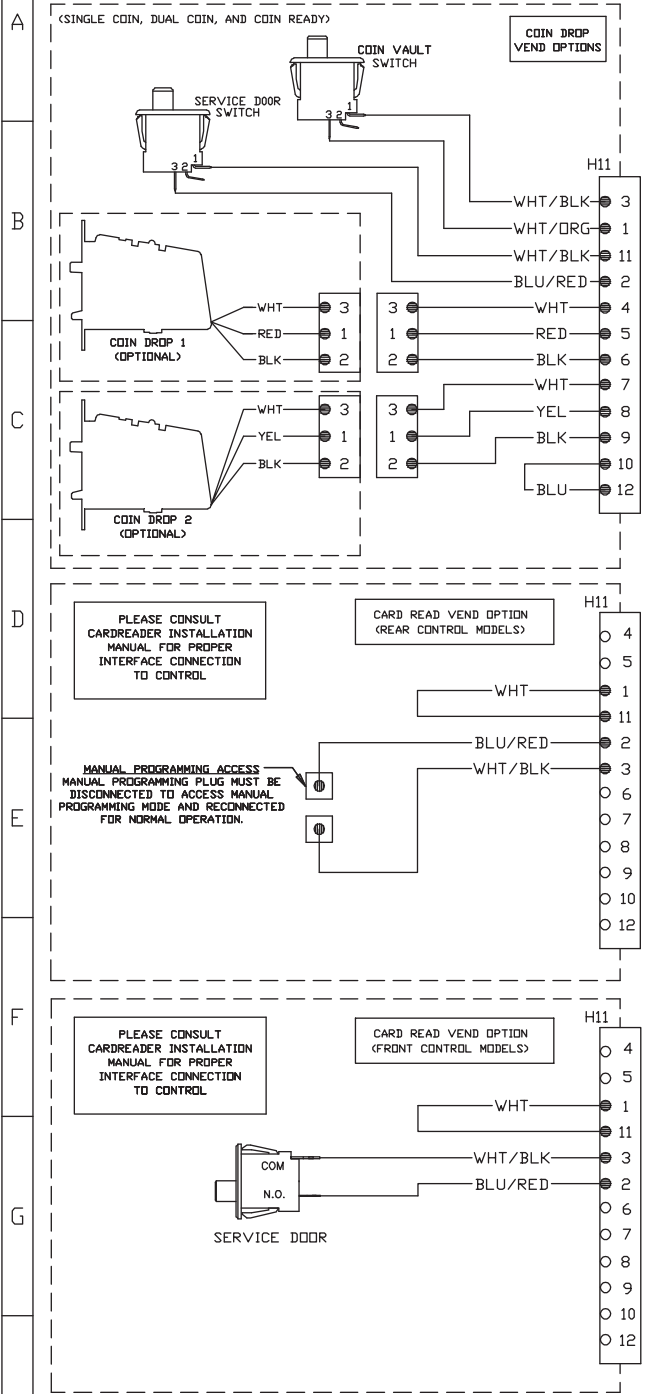


DRYER COMM'L
 ELECTRIC 3 PHASE

SCHEMATIC	REV00	514028
-----------	-------	--------

VEND APPLICATIONS DETAILS



LEGEND OF COMPONENTS

TP - THERMAL PROTECTION

TR2 - TRANSFORMER

AP2 K1 - OUTPUT BOARD POWER RELAY

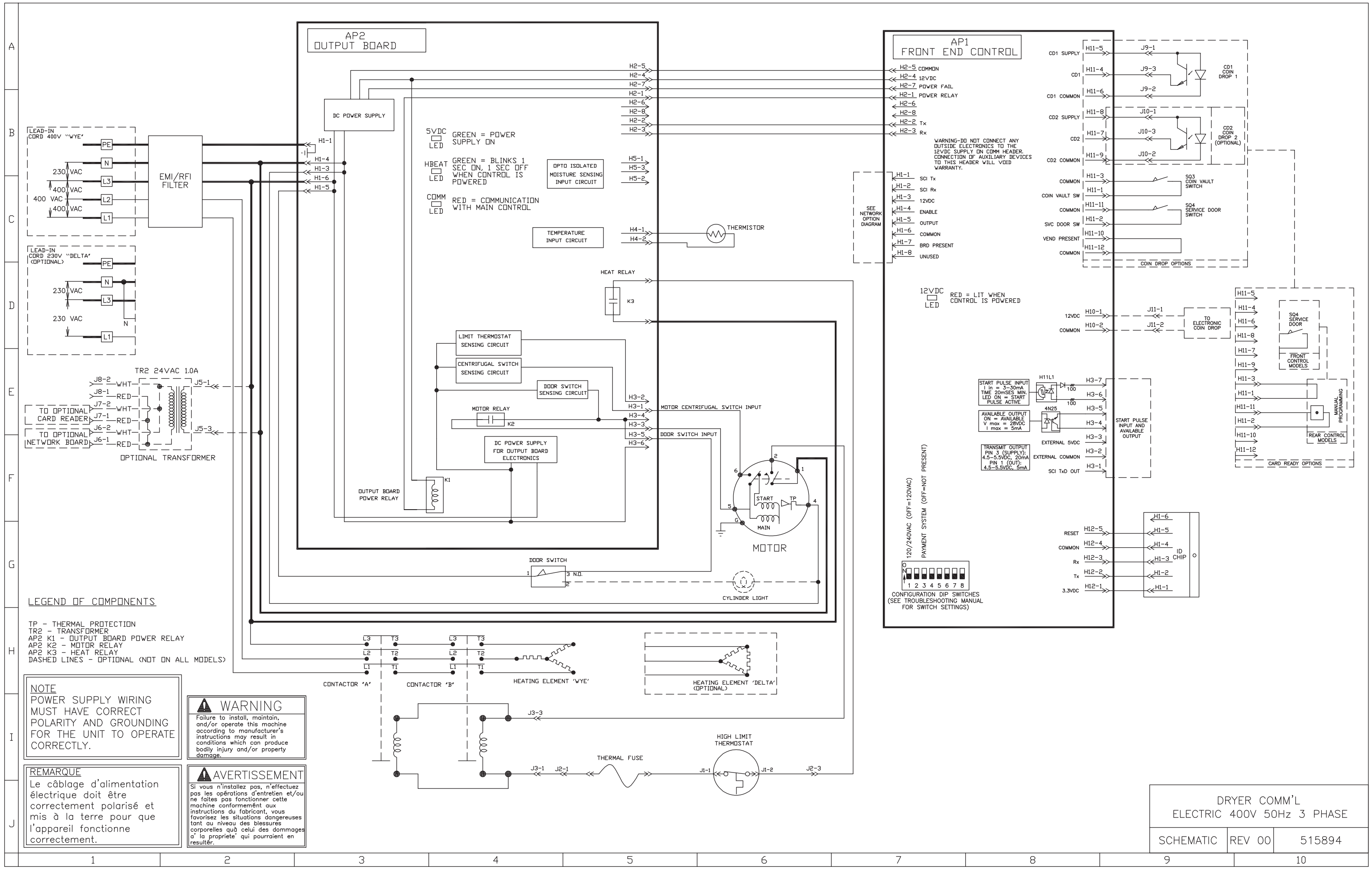
AP2 K2 - MOTOR RELAY

AP2 K3 - HEAT RELAY

DASHED LINES - OPTIONAL (NOT ON ALL MODELS)

DRYER COMM'L
ELECTRIC 3 PHASE

CONNECTION REV00 514028



LEGEND OF COMPONENTS

- TP - THERMAL PROTECTION
- TR2 - TRANSFORMER
- AP2 K1 - OUTPUT BOARD POWER RELAY
- AP2 K2 - MOTOR RELAY
- AP2 K3 - HEAT RELAY
- DASHED LINES - OPTIONAL (NOT ON ALL MODELS)

NOTE
POWER SUPPLY WIRING MUST HAVE CORRECT POLARITY AND GROUNDING FOR THE UNIT TO OPERATE CORRECTLY.

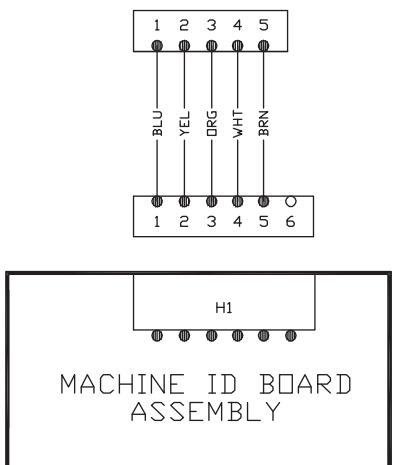
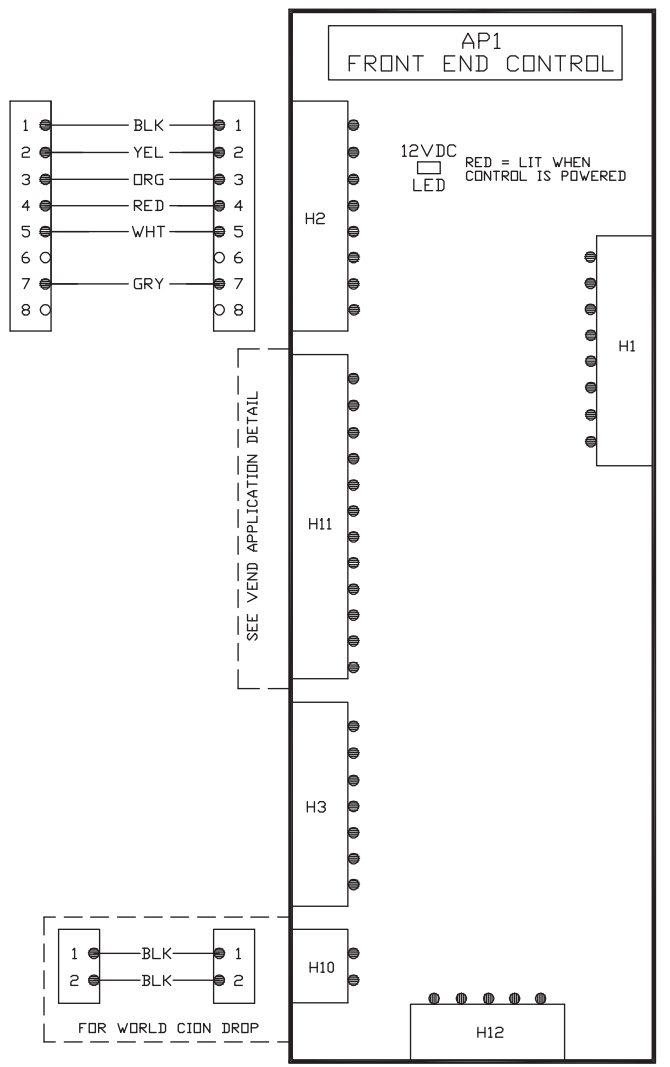
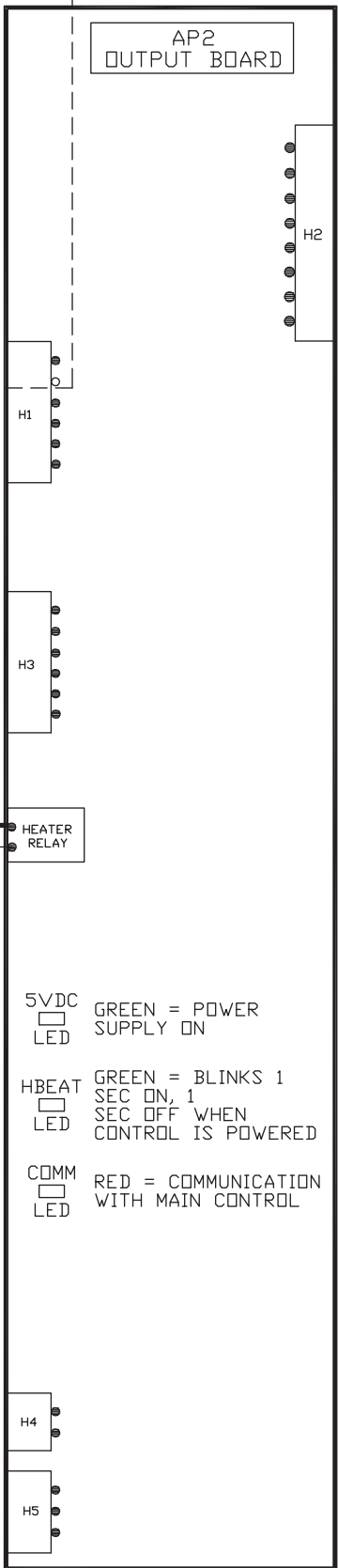
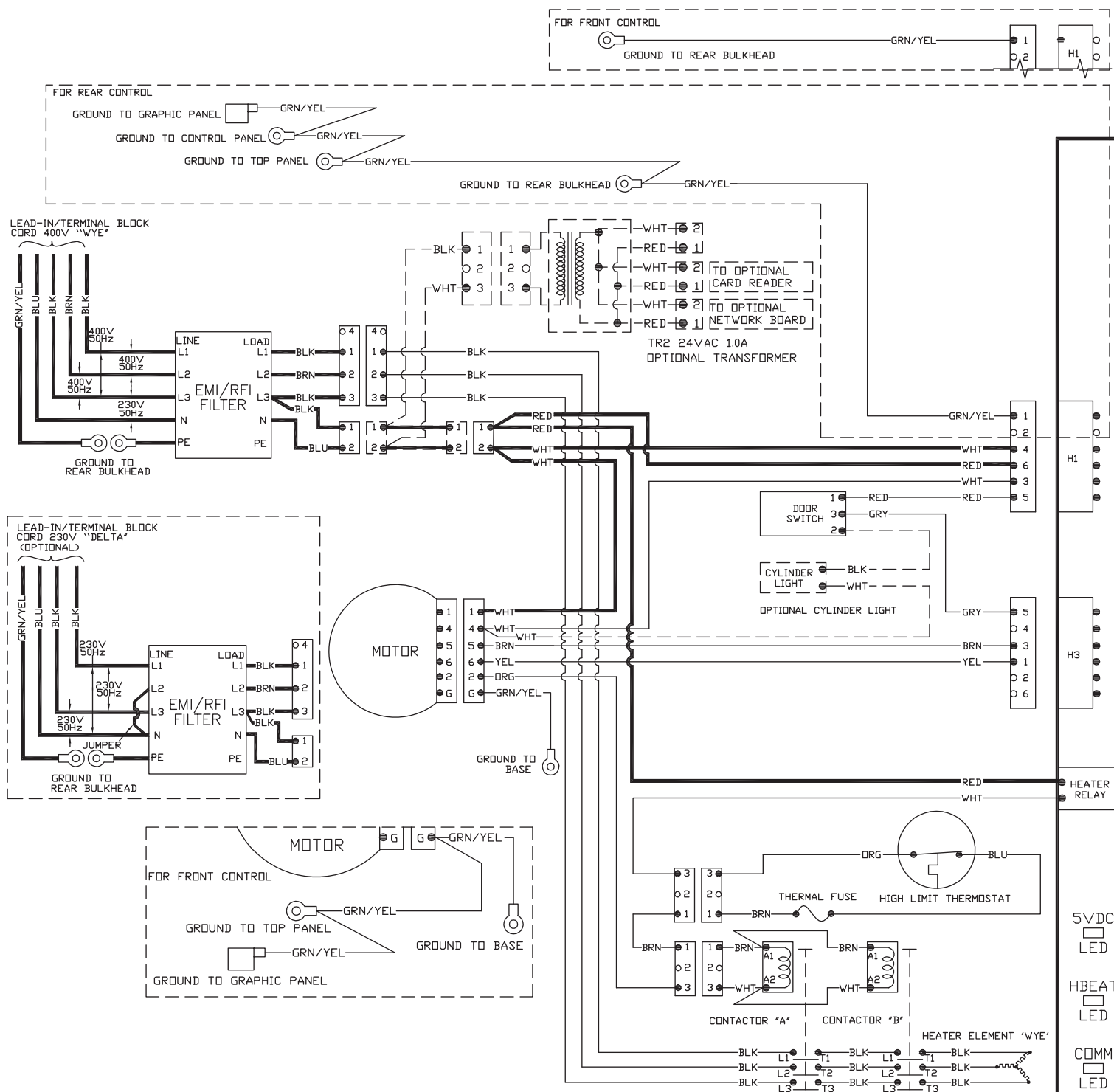
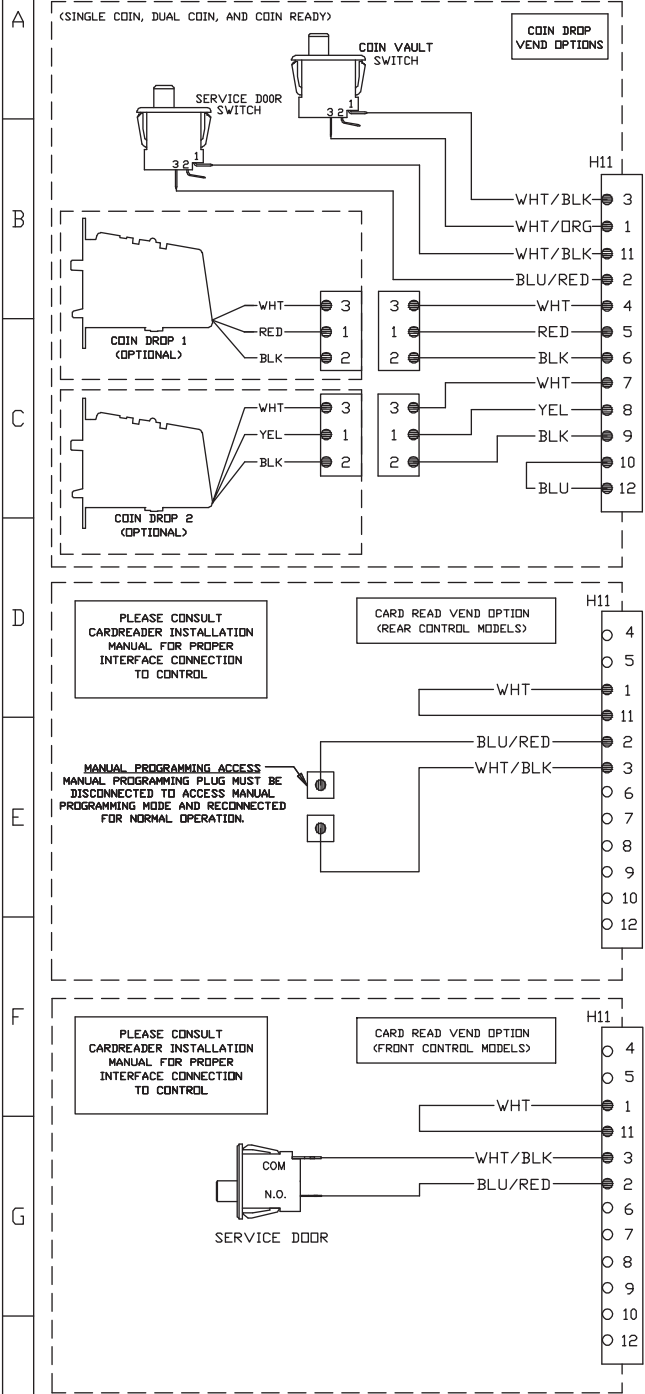
WARNING
Failure to install, maintain, and/or operate this machine according to manufacturer's instructions may result in conditions which can produce bodily injury and/or property damage.

REMARQUE
Le câblage d'alimentation électrique doit être correctement polarisé et mis à la terre pour que l'appareil fonctionne correctement.

AVERTISSEMENT
Si vous n'installez pas, n'effectuez pas les opérations d'entretien et/ou ne faites pas fonctionner cette machine conformément aux instructions du fabricant, vous favorisez les situations dangereuses tant au niveau des blessures corporelles qu'à celui des dommages à la propriété qui pourraient en résulter.

DRYER COMM'L ELECTRIC 400V 50Hz 3 PHASE		
SCHEMATIC	REV 00	515894

VEND APPLICATIONS DETAILS



LEGEND OF COMPONENTS

TP - THERMAL PROTECTION
 TR2 - TRANSFORMER
 AP2 K1 - OUTPUT BOARD POWER RELAY
 AP2 K2 - MOTOR RELAY
 AP2 K3 - HEAT RELAY
 DASHED LINES - OPTIONAL (NOT ON ALL MODELS)

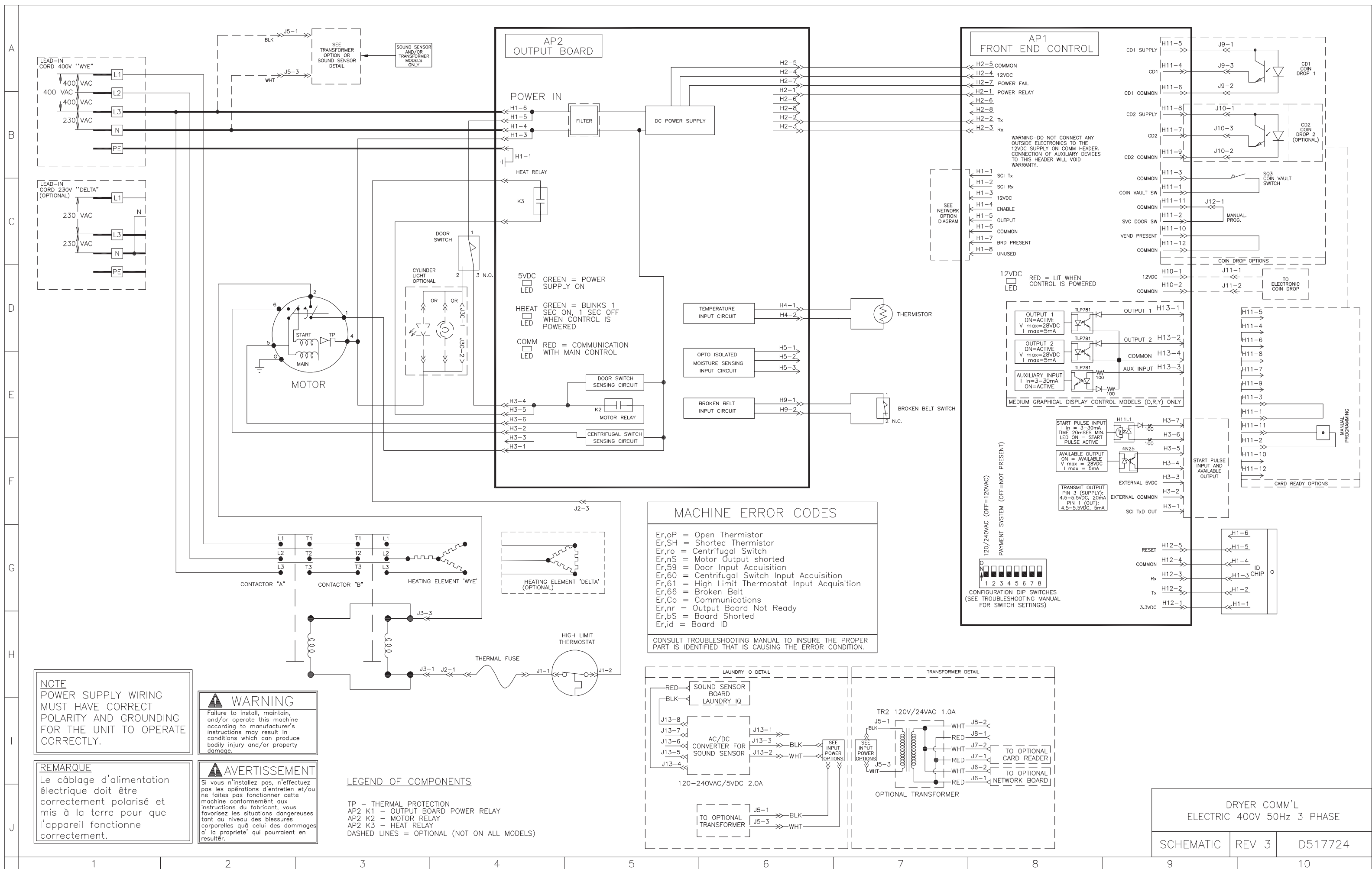
5VDC LED GREEN = POWER SUPPLY ON

HBEAT LED GREEN = BLINKS 1 SEC ON, 1 SEC OFF WHEN CONTROL IS POWERED

COMM LED RED = COMMUNICATION WITH MAIN CONTROL

DRYER COMM'L
 ELECTRIC 400V 50Hz 3 PHASE

CONNECTION REV 00 515894



MACHINE ERROR CODES

Er,oP = Open Thermistor
 Er,SH = Shorted Thermistor
 Er,ro = Centrifugal Switch
 Er,nS = Motor Output shorted
 Er,59 = Door Input Acquisition
 Er,60 = Centrifugal Switch Input Acquisition
 Er,61 = High Limit Thermostat Input Acquisition
 Er,66 = Broken Belt
 Er,Co = Communications
 Er,nr = Output Board Not Ready
 Er,bs = Board Shorted
 Er,id = Board ID

CONSULT TROUBLESHOOTING MANUAL TO INSURE THE PROPER PART IS IDENTIFIED THAT IS CAUSING THE ERROR CONDITION.

NOTE
 POWER SUPPLY WIRING MUST HAVE CORRECT POLARITY AND GROUNDING FOR THE UNIT TO OPERATE CORRECTLY.

WARNING
 Failure to install, maintain, and/or operate this machine according to manufacturer's instructions may result in conditions which can produce bodily injury and/or property damage.

REMARQUE
 Le câblage d'alimentation électrique doit être correctement polarisé et mis à la terre pour que l'appareil fonctionne correctement.

AVERTISSEMENT
 Si vous n'installez pas, n'effectuez pas les opérations d'entretien et/ou ne faites pas fonctionner cette machine conformément aux instructions du fabricant, vous favorisez les situations dangereuses tant au niveau des blessures corporelles qu'à celui des dommages à la propriété qui pourraient en résulter.

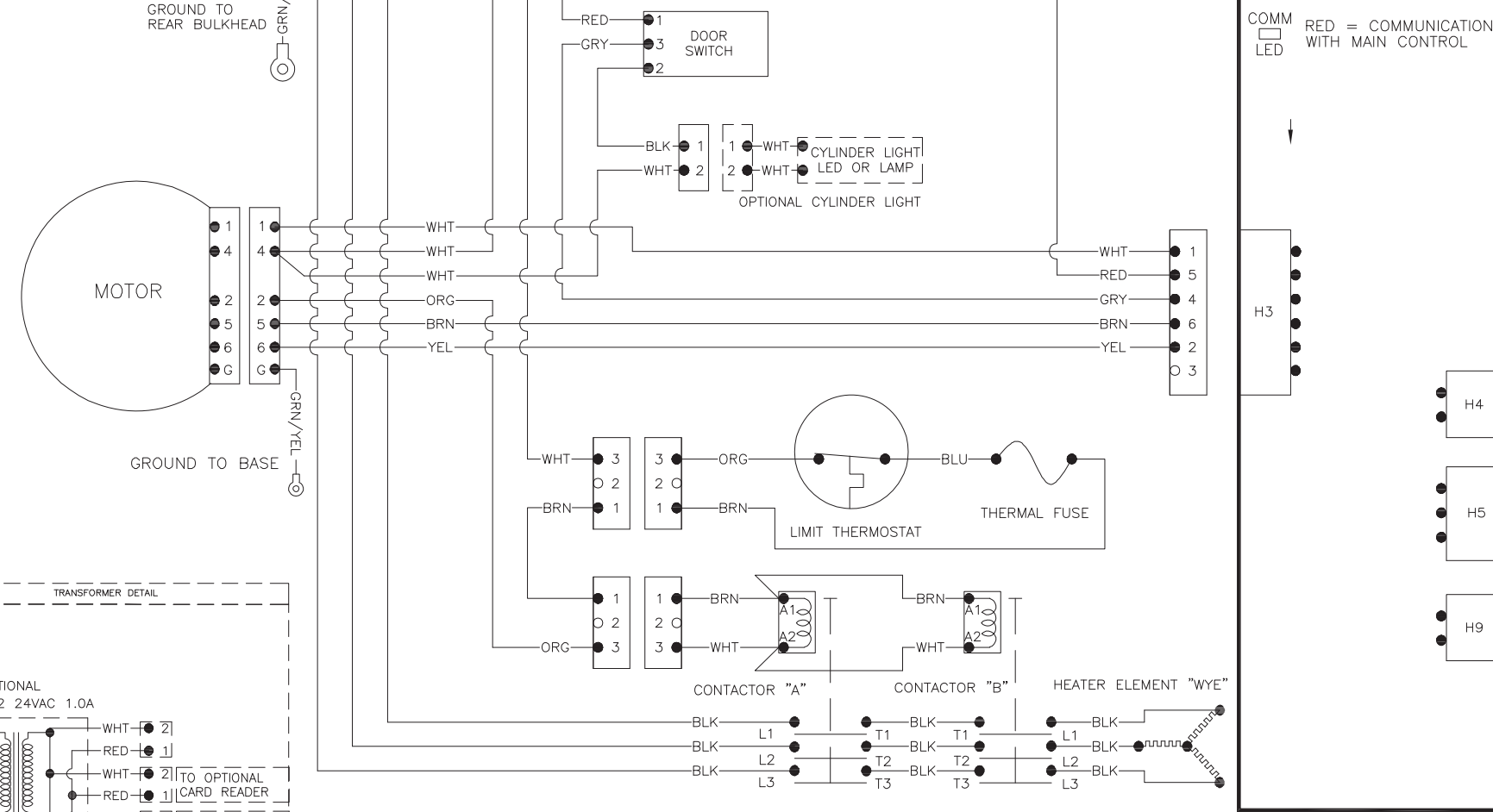
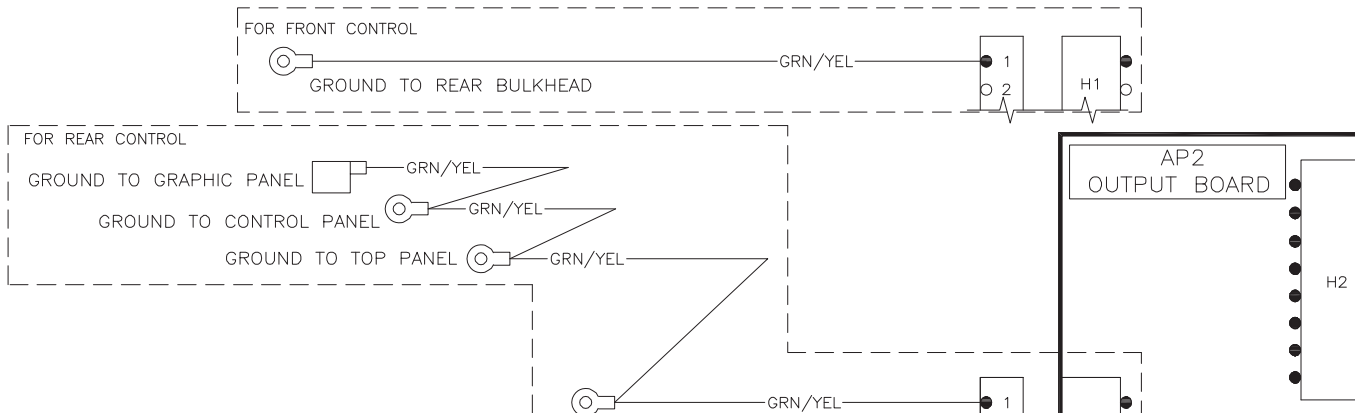
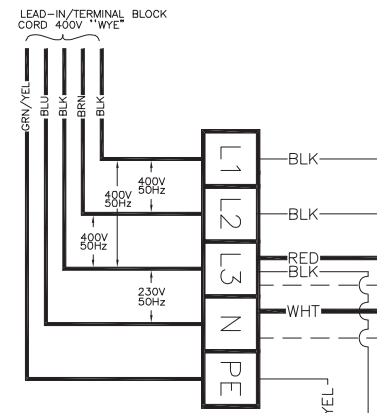
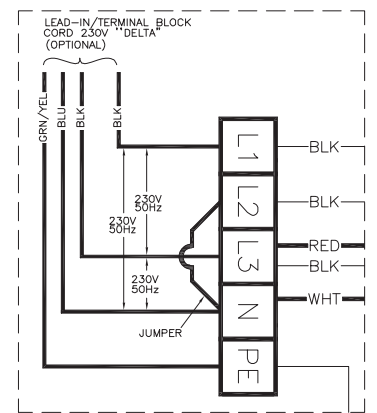
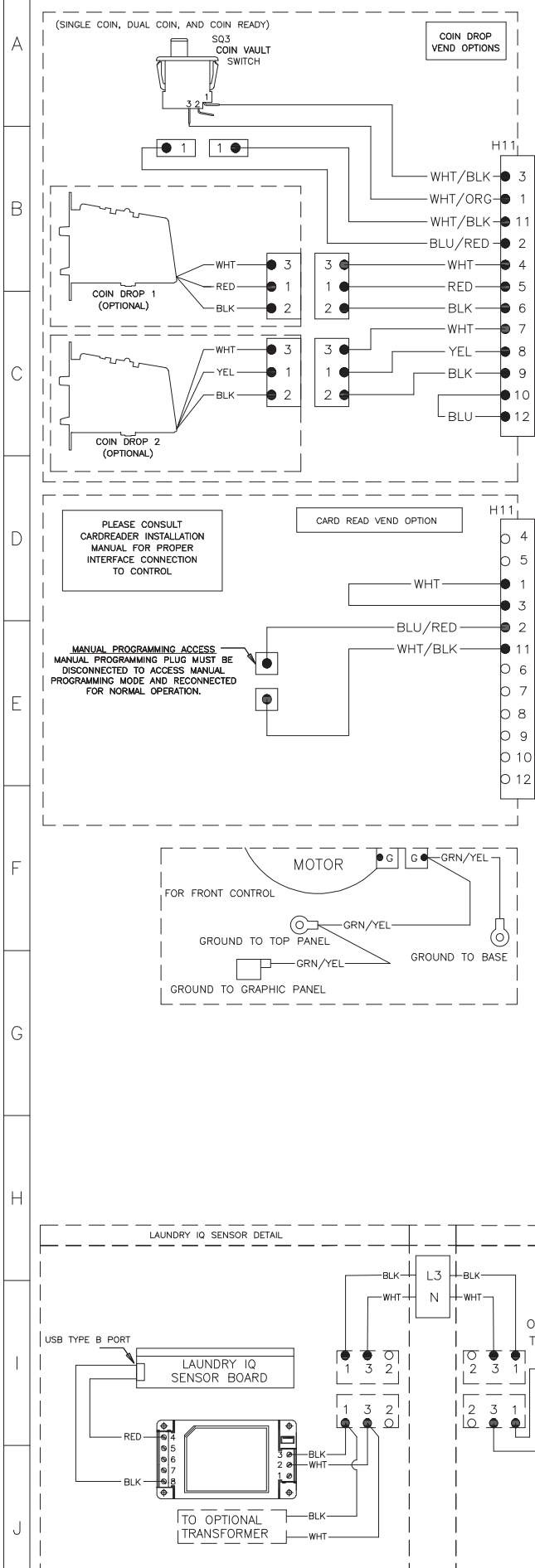
LEGEND OF COMPONENTS

TP - THERMAL PROTECTION
 AP2 K1 - OUTPUT BOARD POWER RELAY
 AP2 K2 - MOTOR RELAY
 AP2 K3 - HEAT RELAY
 DASHED LINES = OPTIONAL (NOT ON ALL MODELS)

DRYER COMM'L
 ELECTRIC 400V 50Hz 3 PHASE

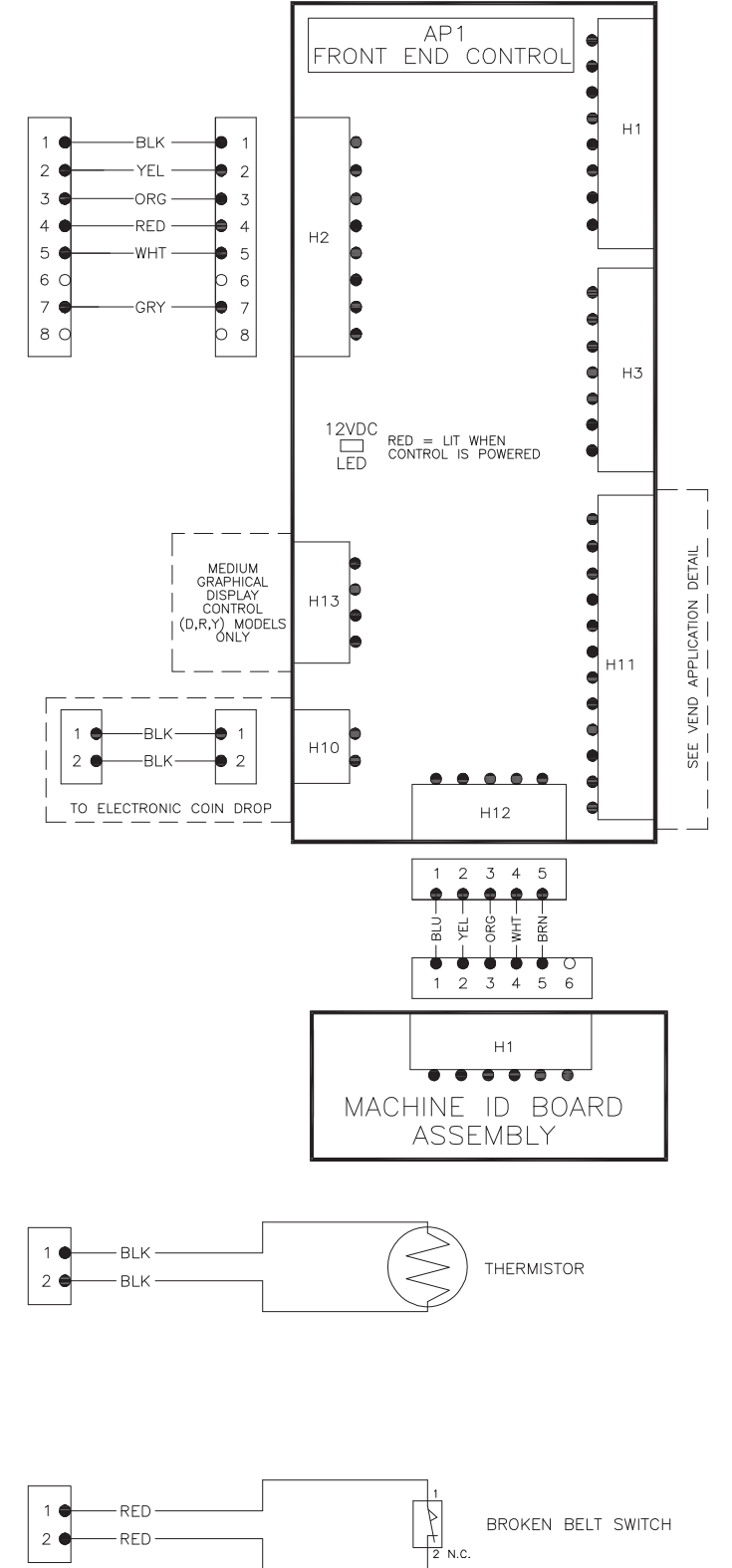
SCHMATIC REV 3 D517724

VEND APPLICATIONS DETAILS



LEGEND OF COMPONENTS

TP - THERMAL PROTECTION
TR2 - TRANSFORMER
AP2 K1 - OUTPUT BOARD POWER RELAY
AP2 K2 - MOTOR RELAY
AP2 K3 - HEAT RELAY
DASHED LINES - OPTIONAL (NOT ON ALL MODELS)



DRYER COMM'L
ELECTRIC 400V 50Hz 3 PHASE